

# FLEX 100

RECIPE DRIVEN R&D / PILOT SCALE TABLET COATING SYSTEM



# FLEX 100

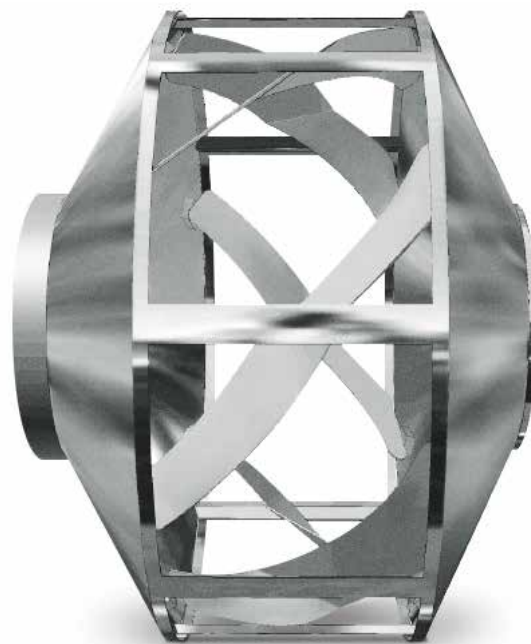
## FLEX 100 R&D / PILOT SCALE TABLET COATER FEATURING THE ACCELA-COTA TECHNOLOGY

The FLEX 100 is a fully integrated, recipe driven R&D pilot scale tablet coating system with exchangeable drums. Designed to offer a wide variety of industry leading high-performance features, the FLEX 100 features external gun positioning, auto-unload, patented Thomas Processing LLC Spray Bar with Schlick patented ABC technology and 6 exchangeable drums allowing for capacity range of 2-120 Liters. FLEX 100 also comes with Wash-In-Place configurations and an optional containment version for use with highly potent products.

## HIGH-PERFORMANCE FEATURES

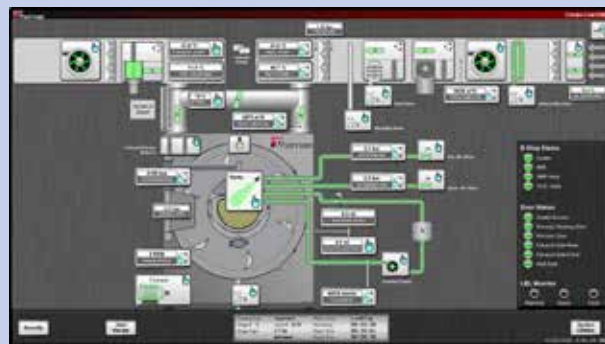
- Suitable for Film, Functional, Sugar and Drug Layer Coating
- Patented Thomas Processing LLC Spray Bar
- External Gun Positioning
- Auto-Unload
- Exchangeable Drums with 2-120 Liter Capacity Range
- Wash-In-Place Options





## INDUSTRY PROVEN FULLY PERFORATED DRUM DESIGN

- Maximum coating quality
- Maximum tablet coating efficiency
- Ideal mixing action
- Turbulence-free air flow path

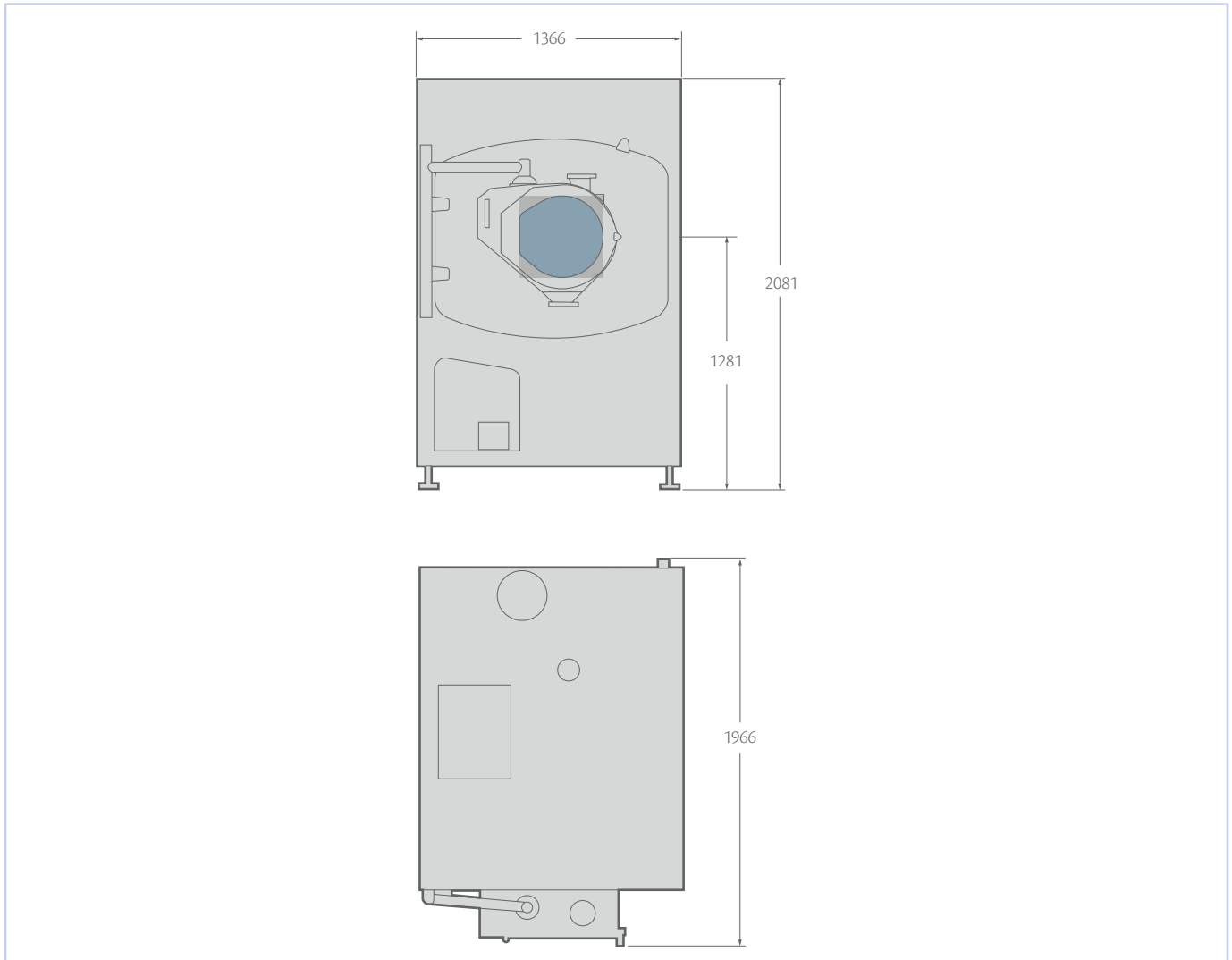


## COMPU-COAT CONTROLS

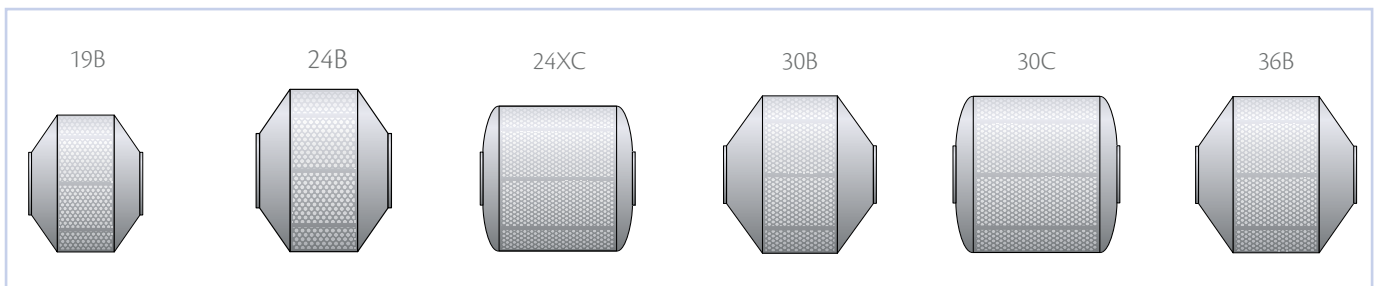
Thomas Processing LLC FLEX 100 is offered with the state of the art manual or recipe driven control systems featuring our Compu-Coat multi-language operating system. The FLEX 100 also features the patented Thomas Processing LLC spray bar with external gun positioning.

# TECHNICAL DATA

## FLEX 100



## DRUM OPTIONS



MODEL	19B	24B	24XC	30B	30C	36B
Drum Diameter Inches, (mm)	19" (440 mm)	24" (610 mm)	24" (610 mm)	30" (760 mm)	30" (760 mm)	36" (915 mm)
Drum Capacity	8 liters	25 liters	75 liters	75 liters	125 liters	110 liters

### THOMAS PROCESSING LLC

200 Airport Road

Elgin, IL · 60123 USA

Tel. +1 (847) 358-5800

www.thomasprocessing.com - www.ima.it